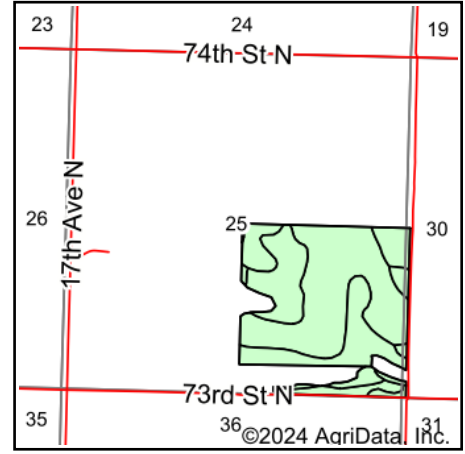
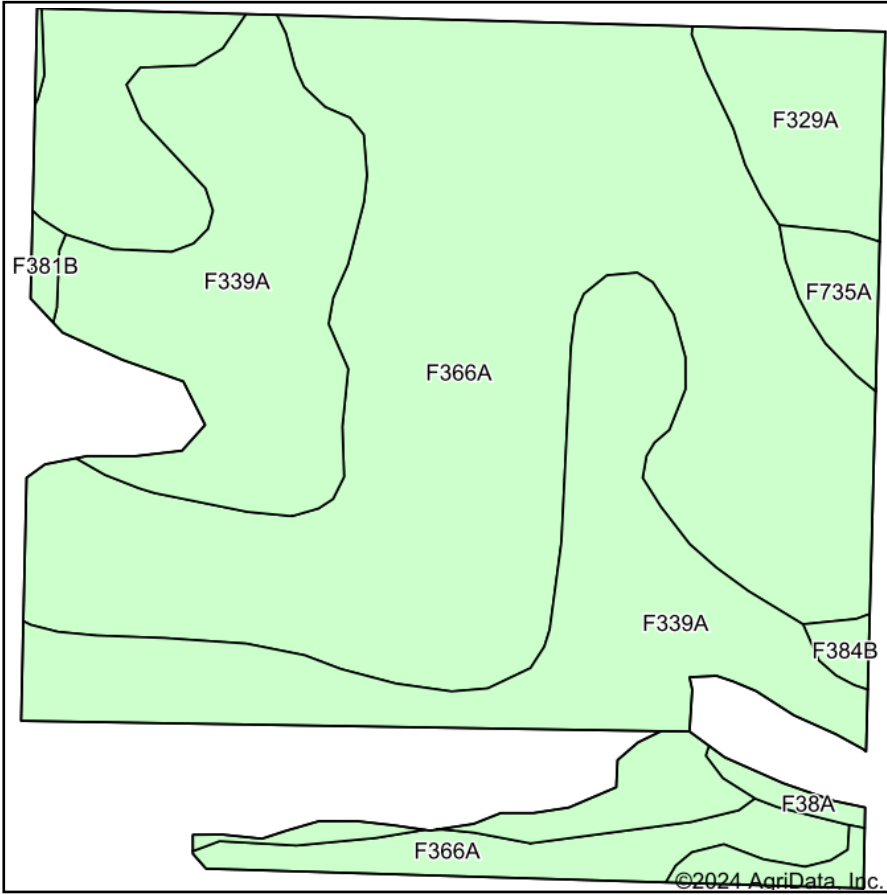


# Soils Map



State: **North Dakota**  
 County: **McHenry**  
 Location: **25-158N-80W**  
 Township: **Grilley**  
 Acres: **136.16**  
 Date: **11/16/2024**



Maps Provided By:



Soils data provided by USDA and NRCS.

Area Symbol: ND049, Soil Area Version: 28

Code	Soil Description	Acres	Percent of field	Non-Irr Class *c	Productivity Index
F366A	Hecla loamy fine sand, 0 to 2 percent slopes	77.82	57.2%	IVe	53
F339A	Ulen fine sandy loam, 0 to 2 percent slopes	46.22	33.9%	IIIe	58
F329A	Wyndmere fine sandy loam, 0 to 2 percent slopes	7.85	5.8%	IIIe	60
F735A	Towner loamy fine sand, 0 to 3 percent slopes	2.24	1.6%	IVe	55
F38A	Arveson fine sandy loam, 0 to 1 percent slopes	0.79	0.6%	IVw	32
F384B	Maddock-Hecla loamy fine sands, 0 to 6 percent slopes	0.70	0.5%	IVe	46
F381B	Aylmer-Bantry fine sands, 0 to 6 percent slopes	0.54	0.4%	VIe	29
<b>Weighted Average</b>				<b>3.61</b>	<b>54.9</b>

\*c: Using Capabilities Class Dominant Condition Aggregation Method