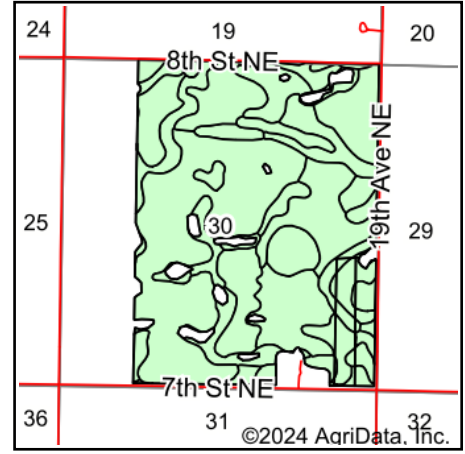
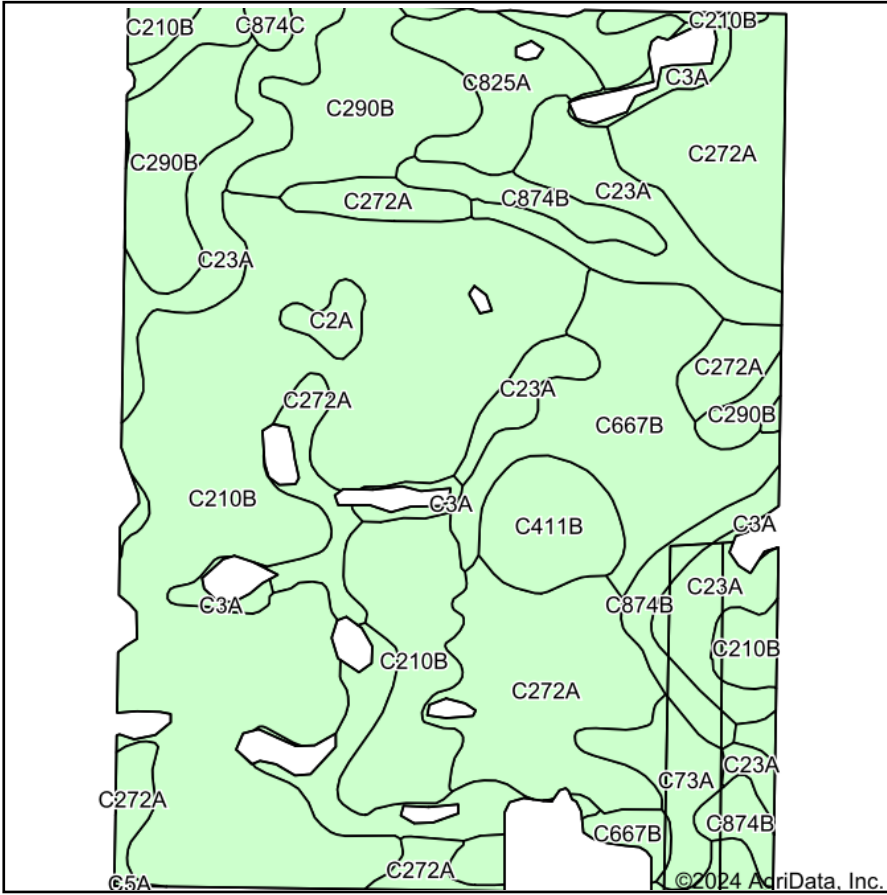


# Soils Map



State: **North Dakota**  
 County: **Sheridan**  
 Location: **30-147N-74W**  
 Township: **Boone**  
 Acres: **444.36**  
 Date: **3/5/2024**



Soils data provided by USDA and NRCS.

Area Symbol: ND083, Soil Area Version: 27

Code	Soil Description	Acres	Percent of field	Non-Irr Class *c	Productivity Index
C210B	Williams-Bowbells loams, 3 to 6 percent slopes	157.38	35.4%	Ile	83
C272A	Hamerly-Tonka complex, 0 to 3 percent slopes	84.80	19.1%	Ile	62
C23A	Vallers, moderately saline-Parnell complex, 0 to 1 percent slopes	62.22	14.0%	IVw	35
C290B	Heimdal-Emrick loams, low precipitation, 3 to 6 percent slopes	38.60	8.7%	Ile	76
C667B	Williams-Niobell loams, 3 to 6 percent slopes	38.18	8.6%	Ile	77
C874B	Wabek-Appam complex, 2 to 6 percent slopes	17.96	4.0%	VIIs	32
C825A	Divide loam, 0 to 2 percent slopes	13.57	3.1%	IIIs	62
C411B	Makoti silty clay loam, 2 to 6 percent slopes	12.43	2.8%	Ile	87
C73A	Hamerly-Vallers loams, moderately saline, 0 to 3 percent slopes	9.02	2.0%	IIIIs	40
C3A	Parnell silty clay loam, 0 to 1 percent slopes	5.63	1.3%	Vw	20
C2A	Tonka silt loam, 0 to 1 percent slopes	2.93	0.7%	IVw	45
C874C	Wabek-Appam complex, 6 to 9 percent slopes	1.46	0.3%	VIIs	26
C5A	Southam silty clay loam, 0 to 1 percent slopes	0.18	0.0%	VIIIw	5
<b>Weighted Average</b>				<b>2.53</b>	<b>66.4</b>

\*c: Using Capabilities Class Dominant Condition Aggregation Method